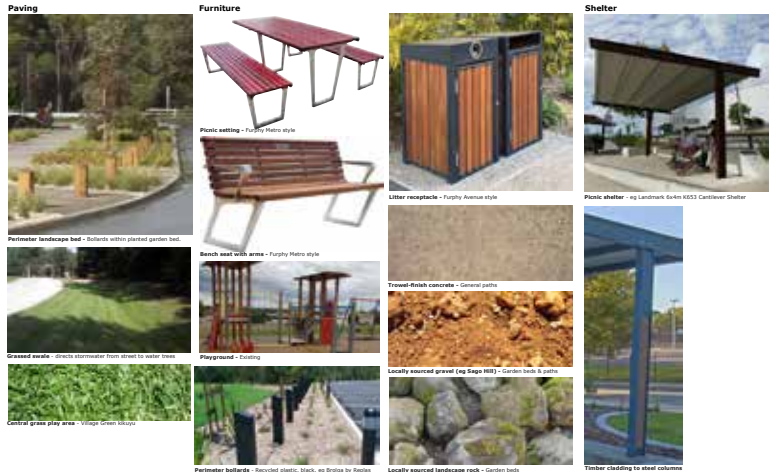
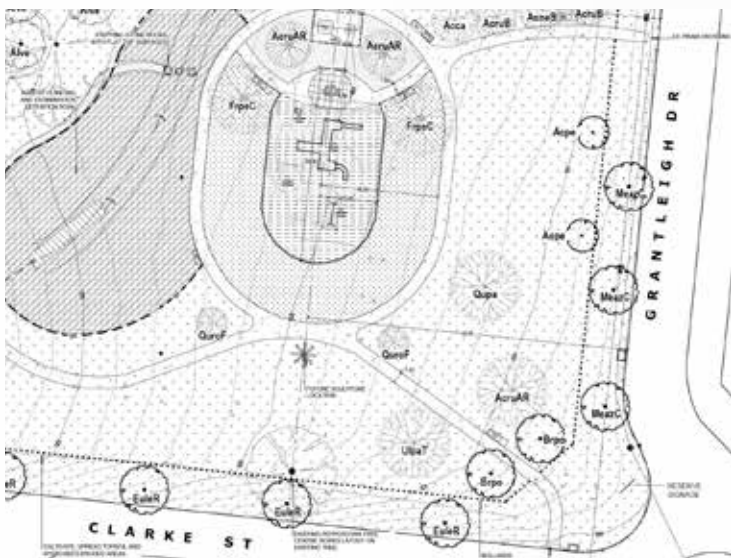


Our Approach

In recent decades Darley has become a major suburban area of Bacchus Marsh, requiring ongoing development of open space assets to provide enhanced recreational opportunities.

Moorabool Shire has identified this reserve as a target for investment in upgraded public amenity and we were asked to prepare a Landscape Master Plan to take to the community for discussion.

Clarke-Grantleigh Reserve Open space development



MATERIALS
CLARKE/GRANTLEIGH ST RESERVE
Darley



Site analysis showed that there were opportunities for connectivity to the nearby Lerderderg Track and to the Moorabool River corridor with the potential to create a habitat biolink between the hills to the west and the Lerderderg River.

Following consultation we undertook design development and prepared detailed construction documentation and specifications.

The project has been funded and is currently scheduled for implementation in during FY2023-24.



Project Specs

- Client:** Moorabool Shire Council
- Location:** Darley, Victoria
- Date:** 20020-22
- Budget:** \$12k
- Role:** Master Plan & Contract Documentation

