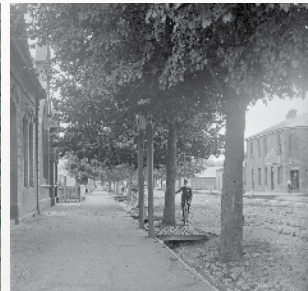
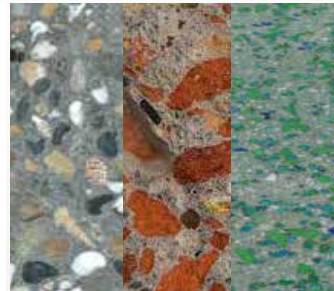
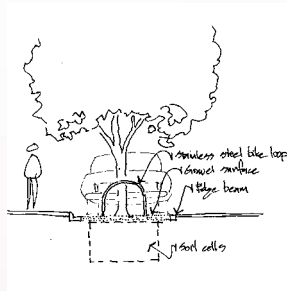




Main Street Bacchus Marsh, Stage 4

Staged streetscaping and plaza works

Client: Moorabool Shire Council
Location: Bacchus Marsh, Victoria
Date: 2021-23, Construction pending
Role: Analysis, consultation, design & documentation
Team: Perry Mills. Scott Munro



Our Approach

The community of Bacchus Marsh, though rapidly growing, values the relaxed country atmosphere and the many historic buildings along Main Street.

When asked to prepare designs for streetscaping and options for a key central plaza area we did extensive onground consultation to understand these values.

The streetscaping sought a solution to the damage caused by existing large Plane Trees, while finding a way to re-establish the historic Elm tree avenues that Bacchus Marsh is famous for.

Design options and concept plans were prepared for Court House Place, guided by consultation with Wurungeri Woi Wurrung elders.

Proposed exposed paving aggregates of various materials will reflect epochs of history, from pre-historic through to Aboriginal occupation and European settlement. Megafauna and human footprints are embedded in the surface indicating the length of Aboriginal culture.

Project Team:
Perry Mills: Consultation, concept design, project lead.
Scott Munro: Detail design & documentation.

0428 848 646
perry@perrymills.com.au
13 Enfield Drive, Torquay 3228
www.perrymills.com.au



Landscape Gardens

Lighting Proposal



Accent & Up-lighting

- Underseat lighting
- Inground uplights
- Pixel Dots

Buckford Neon Neo Flexible strip under the stone seating creating a continuous glow. This will define zones and gardens perimeters.

WE-EF ETC330 Inground luminaires with symmetric distribution to uplight and flood the canopy of trees and sculptures.

Easy to install and configure into any conceivable shape. Smart PXL Dots create spectacular, crisp lighting effects while adding a stylish design element in the space.

