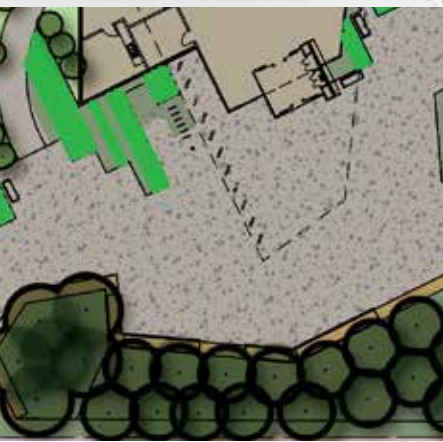


# Surf Coast Multi-Purpose Indoor Stadium

## Forecourt plaza celebrates coastal landscapes



ROCK GABION WALLS



### Project Specs

- Client:** Mantric Architects, for Surf Coast Shire
- Location:** Torquay, Victoria
- Date:** Construction completion 2020
- Budget:** \$150k
- Role:** Design, documentation & construction period inspections

### Our Approach

This \$13.5M indoor recreation facility is a key part of the community infrastructure supporting the Torquay-Jan Juc urban development plan.

The architectural design team found inspiration in the rugged rocky coastline, and the landscape design approach was to generate the corresponding coastal context for the buildings, with linear 'waves' of native plantings breaking up against the walls, and robust, craggy gabion seating walls.

The forecourt to the building creates a space in balance with the scale of the building, while providing the environmental conditions to support its year-round use. Hence a windbreak of fast-growing Drooping Sheoke trees on the southern boundary create a windbreak, with casual seating in the sun.

Materials selected are durable stainless steel, exposed aggregate concrete, and local natural stone.

The project is under construction and completion is expected before the end of 2020.



Perry Mills & Associates  
Landscape Architects  
0428 848 646  
perry@perrymills.com.au  
www.perrymills.com.au